

# MiVoice MX-ONE Provisioning Manager

Web-based application for easy administration of MiVoice MX-ONE

Making administration of  
your communications  
system simple and  
intuitive

## Key Features

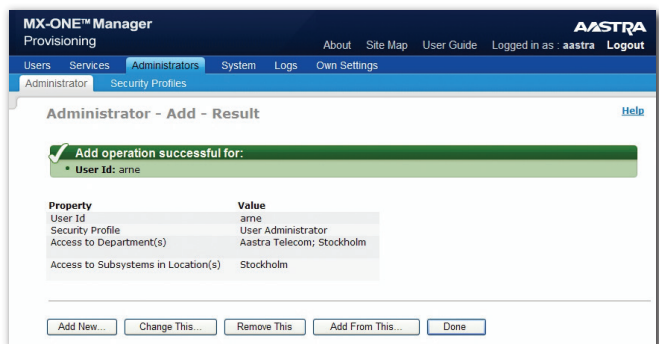
- Web-based configuration tool
- Administer one or multiple extensions at the same time
- Quick access to view, add, remove and change end-users, departments, administrators, extensions, mailboxes
- Integrated with Microsoft Active Directory

With a user-friendly web interface, the MX-ONE Provisioning Manager tool simplifies routine administration of your end-users and their services within the MiVoice MX-ONE communications system.

Through MX-ONE Provisioning Manager, end user settings are shared with applications such as MiVoice MX-ONE Service Node Manager, Mitel OneBox and Mitel CMG. Each end user can be assigned multiple extensions, as well as a mailbox and other services. Provisioning Manager clearly displays task-oriented features, which eliminates the need of synchronization with the MX-ONE Service Node. The Provisioning Manager supports configuration of all MX-ONE extensions. With a direct connection to MX-ONE, it fetches and displays real-time information, such as free numbers and existing extensions, and updates to the settings most recently applied.

## Main Features

- *No special client software required. Configuration tool is web-based*
- *Configures one or several MX-ONE Service Nodes, Mitel OneBox and Mitel CMG, and provides links to other management GUI, such as Mitel Mobile Client portal*
- *View, add, remove and change: end-users, departments, administrators, extensions, mailboxes*
- *Direct access to MiVoice MX-ONE Service Node Manager where you can view, add, remove and change groups, class of services, access codes, voice announcements or more*
- *Templates available for faster, repeatable configuration*
- *Supports HTTPS for secure configuration*
- *Integration with Microsoft Active Directory (AD), providing direct access to the corporate user database*

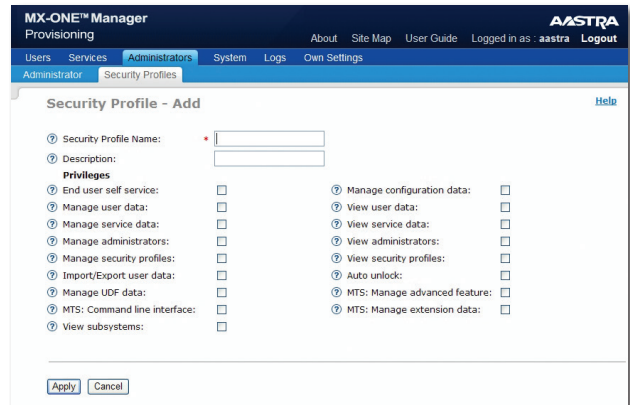


Administrator - user interface

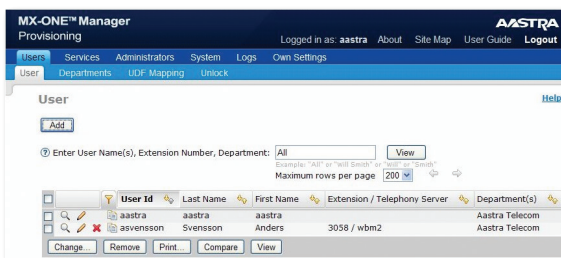
## User Advantages

- Administer one or multiple extensions at the same time
- Print the configuration for one or multiple instances of each task, such as users, extensions, sub-systems, administrators, and security profiles
- Compare multiple entries side-by-side
- Customize and share templates, and minimize field setup time
- Online help with user guide, task help and individual field help
- A site map gives you an overview and direct access to all tasks
- Have immediate insight into all settings associated with all tasks with task orientation
- Support for ring/hunt groups
- Single password for all applications
- Users can view and change their PIN without administrator involvement
- Support for rich communication services way of provisioning and configuration of users located at tenant site or home workers

- Local backup and restore of the MX-ONE Provisioning Manager database, and MX-ONE if required
- Self-service where the end-users can access MX-ONE Provisioning Manager and manage personal lists, function keys and general settings themselves
- Login lock after three unsuccessful login attempts
- Import and export function



MX-ONE Provisioning Manager - security profile interface



MX-ONE Provisioning Manager - user interface

## General Features

- Configuration is organized with end-user simplicity in mind. First, a user account is setup and then associated user services, such as extensions and mailboxes
- Configurable security profiles for MX-ONE system administrators, based on location, authority level and department - affiliation enabling secure access for some to MX-ONE Service Node Manager
- Microsoft AD controlled user account access and password authentication using the same Microsoft AD password policy
- Security log of login attempts, user activities for audit trail log and event log

## Technical Information

### SERVER REQUIREMENTS

- SUSE Linux Enterprise Server 11
- Optional – SMTP-compliant e-mail server

### CLIENT REQUIREMENTS

- Microsoft Internet Explorer 8.0 or later
- Mozilla Firefox 3.0 or later

### MX-ONE PM SUPPORT (BACKWARD COMPATIBLE)

- MiVoice MX-ONE from version 4.1
- CMG from version 2007 SP3
- OneBox from version 4.2

### MX-ONE PM DEPLOYMENT OPTIONS

- Standalone on own Linux server
- On the same server as MX-ONE

### INTERFACES

- HTTP and HTTPS